

Shelf Management

Spring Loaded Systems

Vacuum Formed Trays and Organizers

Product Stops

Case Dividers

Shelf Organizers

Product Risers

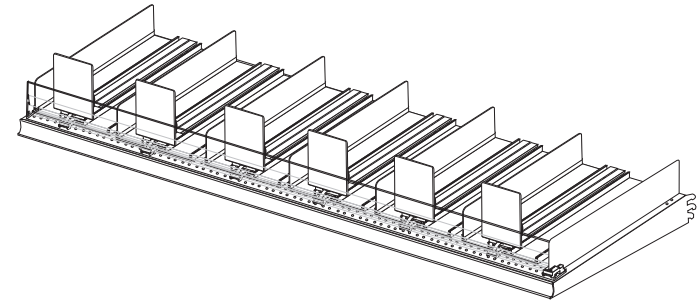
Shelf Management Systems



Easily customizable, our Shelf Management Systems are designed to accept Custom Dividers, Custom Toppers, and Inserts, and to fully incorporate store branding, promotions, even Loyalty Card Programs.



Standard Complete 48" Shelf Systems

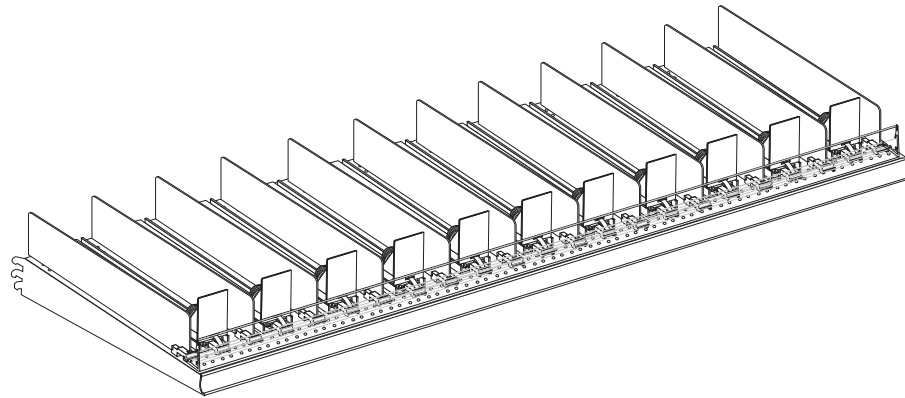


Wide 6 Facings (with Black Dividers)

The large pusher system is ideal for big items like bagged salads, frozen foods, cheeses, and meats.

Includes: Wide Track with Black Dividers, Large Paddles, 6 Facings, 48" long 3" high Clear Fence with Tape or Magnet strip and 1 end Black Divider.

Wide 6 Facings	1-29	30-119	120-599	600-1199	1200+
# B2710009 Wide 6 Facings - 13" & under with Clips	\$76.23	\$57.17	\$48.02	\$43.45	\$38.12
# B2710010 Wide 6 Facings - 13" & under with Tape	\$76.23	\$57.17	\$48.02	\$43.45	\$38.12
# B2710001 Wide 6 Facings - 13" & under	\$76.23	\$57.17	\$48.02	\$43.45	\$38.12
# B2710011 Wide 6 Facings - 13" & under with Magnet	\$78.23	\$59.17	\$50.02	\$45.45	\$40.12
# B2710012 Wide 6 Facings - 13 1/4" to 17" with Clips	\$84.25	\$63.19	\$53.08	\$48.02	\$42.13
# B2710013 Wide 6 Facings - 13 1/4" to 17" with Tape	\$84.25	\$63.19	\$53.08	\$48.02	\$42.13
# B2710002 Wide 6 Facings - 13 1/4" to 17"	\$84.25	\$63.19	\$53.08	\$48.02	\$42.13
# B2710014 Wide 6 Facings - 13 1/4" to 17" with Magnet	\$86.25	\$65.19	\$55.08	\$50.02	\$42.13
# B2710015 Wide 6 Facings - 17 1/4" to 20" with Clips	\$91.22	\$68.42	\$57.47	\$52.00	\$45.61
# B2710016 Wide 6 Facings - 17 1/4" to 20" with Tape	\$91.22	\$68.42	\$57.47	\$52.00	\$45.61
# B2710003 Wide 6 Facings - 17 1/4" to 20"	\$91.22	\$68.42	\$57.47	\$52.00	\$45.61
# B2710017 Wide 6 Facings - 17 1/4" to 20" with Magnet	\$93.22	\$70.42	\$59.47	\$54.00	\$47.61
# B2710018 Wide 6 Facings - 20 1/4" to 25" with Clips	\$99.98	\$74.99	\$62.99	\$56.99	\$49.99
# B2710019 Wide 6 Facings - 20 1/4" to 25" with Tape	\$99.98	\$74.99	\$62.99	\$56.99	\$49.99
# B2710004 Wide 6 Facings - 20 1/4" to 25"	\$99.98	\$74.99	\$62.99	\$56.99	\$49.99
# B2710020 Wide 6 Facings - 20 1/4" to 25" with Magnet	\$101.98	\$76.99	\$64.99	\$58.99	\$51.99



Narrow 11 Facings (with Black Dividers)
 Ideal for smaller items such as herbs, bottles, vitamins, health & beauty items, and canned vegetables & fruits.

Includes: Narrow Track, Small Paddles, 11 facings, 48" long 2" high Clear Fence with Clips, Tape or Magnet strip and 12 Black Dividers.

NARROW 11 FACINGS	1-24	25-99	100-499	500-999	1000+
# B2710021 Narrow 11 Facings - 13" & under with Clips	\$97.62	\$73.22	\$61.50	\$55.64	\$48.81
# B2710022 Narrow 11 Facings - 13" & under with Tape	\$97.62	\$73.22	\$61.50	\$55.64	\$48.81
# B2710005 Narrow 11 Facings - 13" & under	\$97.62	\$73.22	\$61.50	\$55.64	\$48.81
# B2710023 Narrow 11 Facings - 13" & under with Magnet	\$99.62	\$75.22	\$63.50	\$57.64	\$50.81
# B2710024 Narrow 11 Facings - 13 1/4" to 17" with Clips	\$105.31	\$78.98	\$66.35	\$60.03	\$52.66
# B2710025 Narrow 11 Facings - 13 1/4" to 17" with Tape	\$105.31	\$78.98	\$66.35	\$60.03	\$52.66
# B2710006 Narrow 11 Facings - 13 1/4" to 17"	\$105.31	\$78.98	\$66.35	\$60.03	\$52.66
# B2710026 Narrow 11 Facings - 13 1/4" to 17" with Magnet	\$107.31	\$80.98	\$68.35	\$62.03	\$54.66
# B2710027 Narrow 11 Facings - 17 1/4" to 20" with Clips	\$112.26	\$84.20	\$70.72	\$63.99	\$56.13
# B2710028 Narrow 11 Facings - 17 1/4" to 20" with Tape	\$112.26	\$84.20	\$70.72	\$63.99	\$56.13
# B2710007 Narrow 11 Facings - 17 1/4" to 20"	\$112.26	\$84.20	\$70.72	\$63.99	\$56.13
# B2710029 Narrow 11 Facings - 17 1/4" to 20" with Magnet	\$114.26	\$86.20	\$72.72	\$65.99	\$58.13
# B2710030 Narrow 11 Facings - 20 1/4" to 25" with Clips	\$120.68	\$90.51	\$76.03	\$68.79	\$60.34
# B2710031 Narrow 11 Facings - 20 1/4" to 25" with Tape	\$120.68	\$90.51	\$76.03	\$68.79	\$60.34
# B2710008 Narrow 11 Facings - 20 1/4" to 25"	\$120.68	\$90.51	\$76.03	\$68.79	\$60.34
# B2710032 Narrow 11 Facings - 20 1/4" to 25" with Magnet	\$122.68	\$92.51	\$78.03	\$70.79	\$62.34



Shelf Management Systems allow for seamless merchandising throughout shelf sections, and eliminate lost space.



Each Track and Divider can easily slide left or right to any desired position.

NARROW FACINGS

BUILD YOUR OWN

BUILD YOUR OWN

Pusher Track

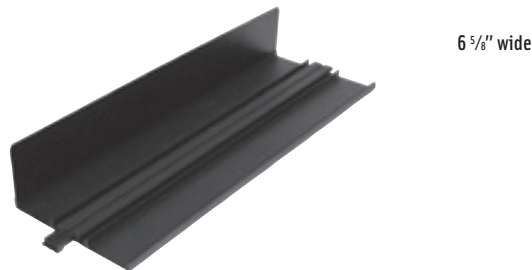
All Pusher Track includes Front Fence Adapter.

Pusher Track



Narrow Pusher Track (2" Wide)	1-274	275-999	1000-4999	5000-9999	10000+
# B2720001 Pusher Track - Narrow - 13" and under	\$2.84	\$2.13	\$1.79	\$1.62	\$1.42
# B2720002 Pusher Track - Narrow - 13 1/4" to 17"	\$3.43	\$2.57	\$2.16	\$1.96	\$1.72
# B2720003 Pusher Track - Narrow - 17 1/4" to 20"	\$3.92	\$2.94	\$2.47	\$2.23	\$1.96
# B2720004 Pusher Track - Narrow - 20 1/4" to 25"	\$4.62	\$3.47	\$2.91	\$2.63	\$2.31

Wide Pusher Track with Divider



Wide Pusher Track with Divider	1-274	275-999	1000-4999	5000-9999	10000+
# B2720009 Pusher Track - Wide with Divider - 13" and under	\$6.31	\$4.73	\$3.98	\$3.60	\$3.16
# B2720010 Pusher Track - Wide with Divider - 13 1/4" to 17"	\$7.63	\$5.72	\$4.81	\$4.35	\$3.82
# B2720011 Pusher Track - Wide with Divider - 17 1/4" to 20"	\$8.77	\$6.58	\$5.53	\$5.00	\$4.39
# B2720012 Pusher Track - Wide with Divider - 20 1/4" to 25"	\$10.22	\$7.67	\$6.44	\$5.83	\$5.11

Build Your Own System

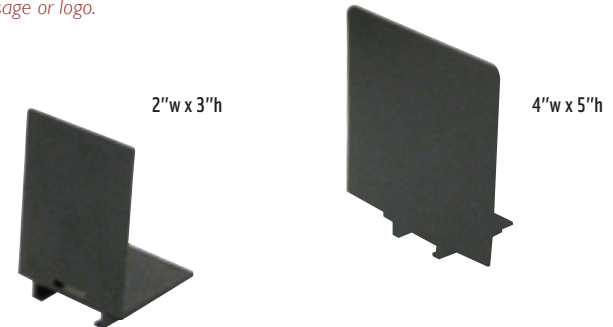
Wide Pusher Track



Wide Pusher Track (6.625" Wide)	1-274	275-999	1000-4999	5000-9999	10000+
# B2720005 Pusher Track - Wide - 13" and under	\$5.18	\$3.89	\$3.26	\$2.95	\$2.59
# B2720006 Pusher Track - Wide - 13 1/4" to 17"	\$6.34	\$4.76	\$3.99	\$3.61	\$3.17
# B2720007 Pusher Track - Wide - 17 1/4" to 20"	\$7.26	\$5.45	\$4.57	\$4.14	\$3.63
# B2720008 Pusher Track - Wide - 20 1/4" to 25"	\$8.65	\$6.49	\$5.45	\$4.93	\$4.33

Paddles All Paddles include Variable Tension Springs

Paddle dimensions can be easily customized, and can also be printed with your message or logo.



Paddles (Black)	1-274	275-999	1000-4999	5000-9999	10000+
# B2720013 Small Paddles (2" x 3")	\$2.88	\$2.16	\$1.81	\$1.64	\$1.44
# B2720014 Large Paddles (4" x 5")	\$3.49	\$2.62	\$2.20	\$1.99	\$1.75



Customizing your Shelf Management System has never been easier. Simply pick the pieces you want for your Pusher Tray System, and products will be displayed in an appealing and user-friendly way.

Clear Front Fences are available without attachments, or you can choose from Peg Clips, Double-stick tape or Magnet strips. Call for assistance in choosing an attachment that will work for your Shelf Management System.



Peg Clips



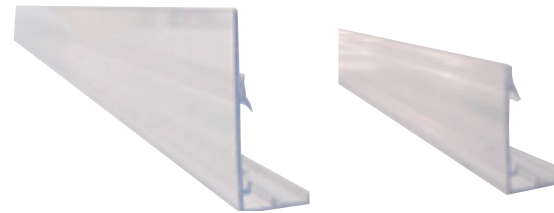
Double-stick Tape



Magnetic Strip

Clear Front Fence

Includes 1 1/4" Channel and Top Sign Holder



2 Foot Lengths	1-49	50-199	200-999	1000-1999	2000+
# B2720015 Low Front Fence (2" high) - no attachment - 2 foot length	\$8.13	\$6.10	\$5.12	\$4.63	\$4.07
# B2720016 Low Front Fence (2" high) - with Peg Clips - 2 foot length	\$8.13	\$6.10	\$5.12	\$4.63	\$4.07
# B2720017 Low Front Fence (2" high) - with Double-stick Tape - 2 foot length	\$8.13	\$6.10	\$5.12	\$4.63	\$4.07
# B2720018 Low Front Fence (2" high) - with Magnetic strip - 2 foot length	\$9.13	\$6.85	\$5.75	\$5.20	\$4.57
# B2720019 High Front Fence (3" high) - no attachment - 2 foot length	\$8.13	\$6.10	\$5.12	\$4.63	\$4.07
# B2720020 High Front Fence (3" high) - with Peg Clips - 2 foot length	\$8.13	\$6.10	\$5.12	\$4.63	\$4.07
# B2720021 High Front Fence (3" high) - with Double-stick tape - 2 foot length	\$8.13	\$6.10	\$5.12	\$4.63	\$4.07
# B2720022 High Front Fence (3" high) - with Magnetic strip - 2 foot length	\$9.13	\$6.85	\$5.75	\$5.20	\$4.57
4 Foot Lengths	1-24	25-99	100-499	500-999	1000+
# B2720023 Low Front Fence (2" high) - no attachment - 4 foot length	\$15.86	\$11.90	\$9.99	\$9.04	\$7.93
# B2720024 Low Front Fence (2" high) - with Peg Clips - 4 foot length	\$15.86	\$11.90	\$9.99	\$9.04	\$7.93
# B2720025 Low Front Fence (2" high) - with Double-stick tape - 4 foot length	\$15.86	\$11.90	\$9.99	\$9.04	\$7.93
# B2720026 Low Front Fence (2" high) - with magnetic strip - 4 foot length	\$17.86	\$13.40	\$11.25	\$10.18	\$8.93
# B2720027 High Front Fence (3" high) - no attachment - 4 foot length	\$15.86	\$11.90	\$9.99	\$9.04	\$7.93
# B2720028 High Front Fence (3" high) - with Peg Clips - 4 foot length	\$15.86	\$11.90	\$9.99	\$9.04	\$7.93
# B2720029 High Front Fence (3" high) - with Double-stick tape - 4 foot length	\$15.86	\$11.90	\$9.99	\$9.04	\$7.93
# B2720030 High Front Fence (3" high) - with Magnetic strip - 4 foot length	\$17.86	\$13.40	\$11.25	\$10.18	\$8.93

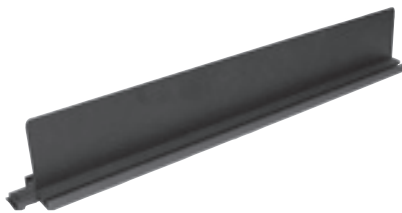
CLEAR FRONT FENCE

Black Divider



Black Dividers	1-99	100-399	400-1499	1500-2999	3000+
# B2720031 Black Divider - 2 1/2" high - 13" and under	\$1.57	\$1.18	\$0.99	\$0.89	\$0.79
# B2720032 Black Divider - 2 1/2" high - 13 1/4" to 17"	\$1.67	\$1.25	\$1.05	\$0.95	\$0.84
# B2720033 Black Divider - 2 1/2" high - 17 1/4" to 20"	\$1.80	\$1.35	\$1.13	\$1.03	\$0.90
# B2720034 Black Divider - 2 1/2" high - 20 1/4" to 25"	\$1.86	\$1.40	\$1.17	\$1.06	\$0.93

Wide Base Black Dividers



Used in conjunction with Narrow Pusher Track for extra wide (12"+) items such as pizza, frozen dinners etc..

Wide 2" Base Black Dividers	1-99	100-399	400-1499	1500-2999	3000+
# B2720039 Wide Base Black Divider - 2 1/2" high - 13" and under	\$3.48	\$2.61	\$2.19	\$1.98	\$1.74
# B2720040 Wide Base Black Divider - 2 1/2" high - 13 1/4" to 17"	\$4.13	\$3.10	\$2.60	\$2.35	\$2.07
# B2720041 Wide Base Black Divider - 2 1/2" high - 17 1/4" to 20"	\$4.76	\$3.57	\$3.00	\$2.71	\$2.38
# B2720042 Wide Base Black Divider - 2 1/2" high - 20 1/4" to 25"	\$5.39	\$4.04	\$3.40	\$3.07	\$2.70



Dividers can be custom made to any size and can also be printed with your logo and colors.

Dividers

For Wide Pusher Track, the divider comes attached to the left side of each pusher. For Narrow Pusher Track, each divider comes with a front fence adapter. **We suggest ordering one divider per facing and one divider at the end to close the section.**

Clear Dividers



Clear Divider	1-99	100-399	400-1499	1500-2999	3000+
# B2720035 Clear Divider - 2 1/2" high - 13" and under	\$1.96	\$1.47	\$1.23	\$1.12	\$0.98
# B2720036 Clear Divider - 2 1/2" high - 13 1/4" to 17"	\$2.18	\$1.64	\$1.37	\$1.24	\$1.09
# B2720037 Clear Divider - 2 1/2" high - 17 1/4" to 20"	\$2.35	\$1.76	\$1.48	\$1.34	\$1.18
# B2720038 Clear Divider - 2 1/2" high - 20 1/4" to 25"	\$2.61	\$1.96	\$1.64	\$1.49	\$1.31

Brand building Shelf Management Systems

We can help you merchandise your products in a variety of ways to increase your sales and gain more market share. From simple product signage to full category merchandising displays, we can customize a program to fit your requirements.

Spring-Loaded Trays

The Spring-loaded feature pushes the next package forward as the front package is purchased. With your logo added to the front, it's an ideal way to promote your products.



Spring-Loaded Tray for Bottles

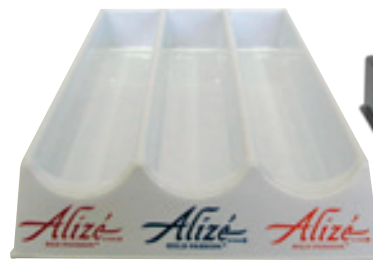
Vacuum Formed Trays

Merchandise your product while keeping it organized and easy to shop. Each tray can be custom formed to meet your specifications.

Contact us for more info on our stock dies or for pricing on a custom formed tray.



3-Step Counter Tray



Custom Printed Trays



Vacuum Formed Product Organizer

Product Stops

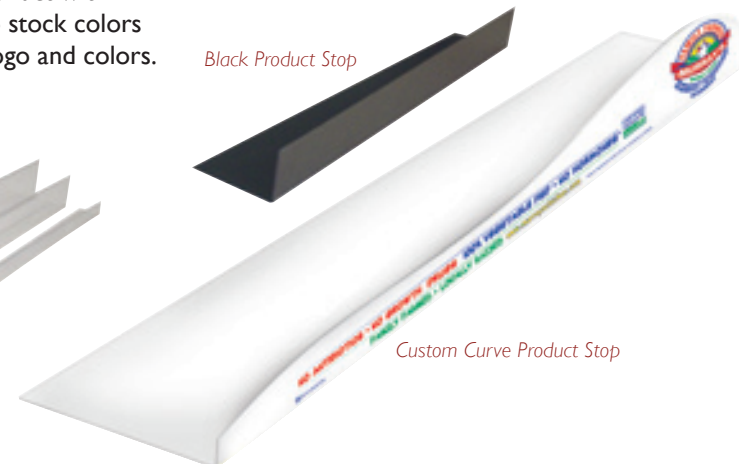
Organize and identify your product with Product Stops, available in two stock colors or customize to match your logo and colors.



Black Product Stop



Clear Product Stop



Custom Curve Product Stop



Enhance your store brand, as shown above, or use for product brands

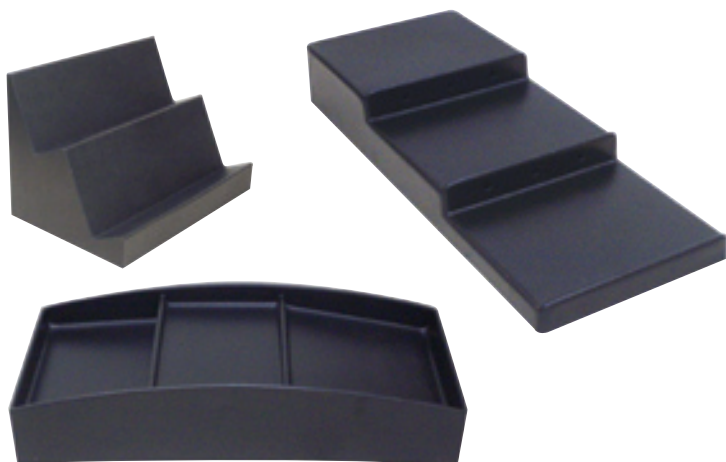
Case Dividers

Separate your product with our case dividers available in a variety of shapes and sizes. Brand your product by custom printing on both sides. Dividers are available with multiple scores for easy re-sizing.



Product Risers

When there's limited space to showcase merchandise, utilizing these vacuum formed pieces will allow full face and height to your products. Adding a riser will create a stunning display that's both easy and practical.



Custom Case Dividers can be made to any shape or size. Dividers can also be manufactured with multiple scores for easy sizing.

